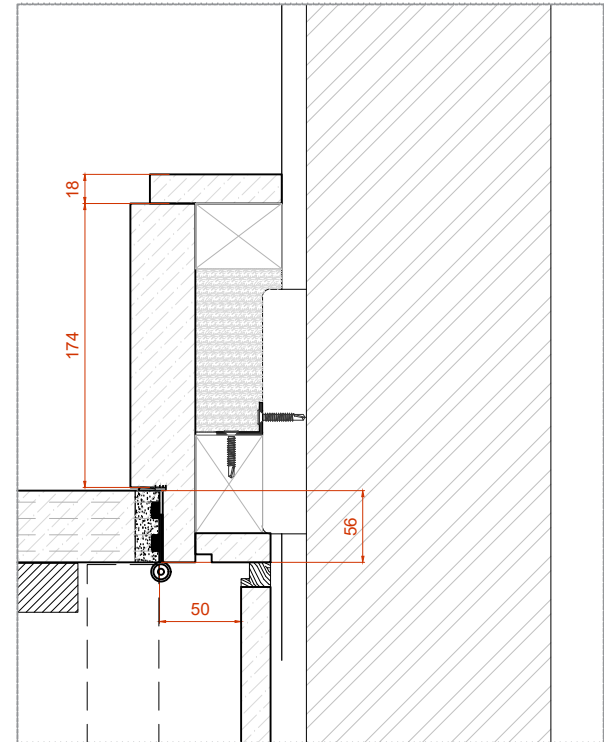
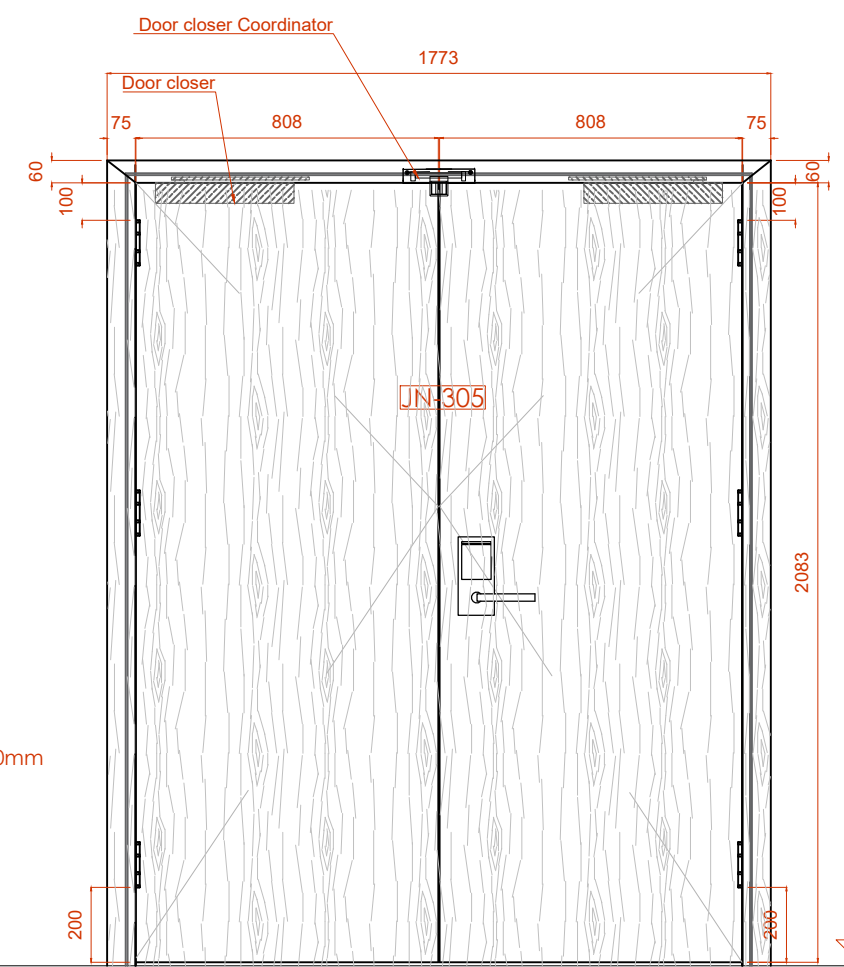
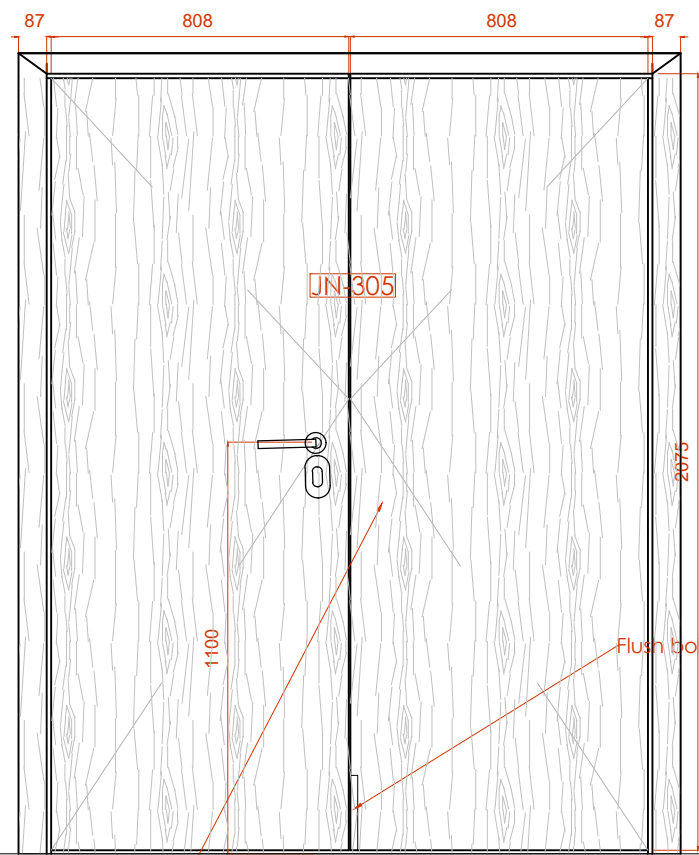
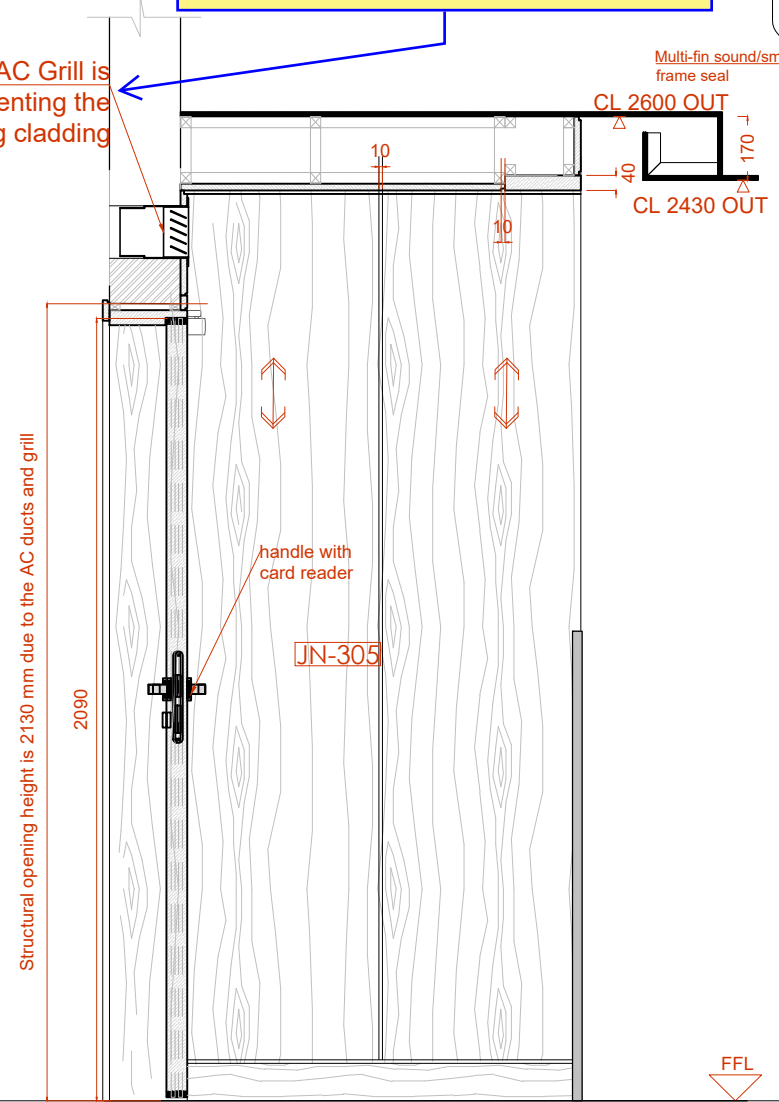
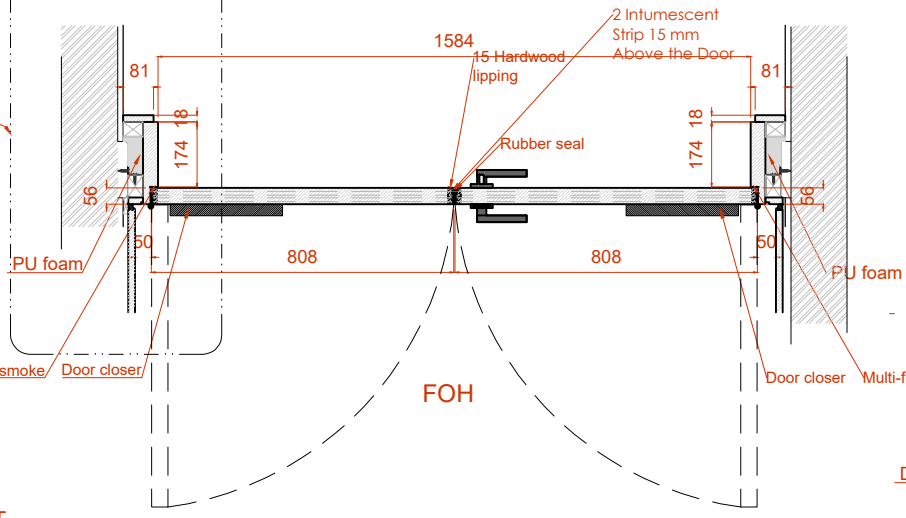


Approved with comments
 Quantity and to be verified by joiner
 Size to be verified on site

Is this still the case as the grill is shown lower now and it looks like it is fitting below the ceiling cladding

AC Grill is preventing the ceiling cladding



Section

Handle with card reader "by others"

FOH

BOH



D16a	ACC Corridor double door- Access to lift	
Panel Size	1720 mm W x 2350mm H x 56mm thk	
Finish	Timber panel , Timber frame to match JN-305	
Door leaf type	Double door, Single swing flush door	
Ironmongery & Accessories	vingcard Electronic lockset	By others
	Hinges Type 2 : Hinges with curved edges / SS finish	Black Finish
	Door stop floor mounted	Black Finish
	DORMA TS93 GSR Door closer with coordinator	Black Finish
Location	ACC passage BOH - Access to Lift	
Total QTY	7	
Fire Rating	60 Mins	
Acoustic	30dB	
Remarks		